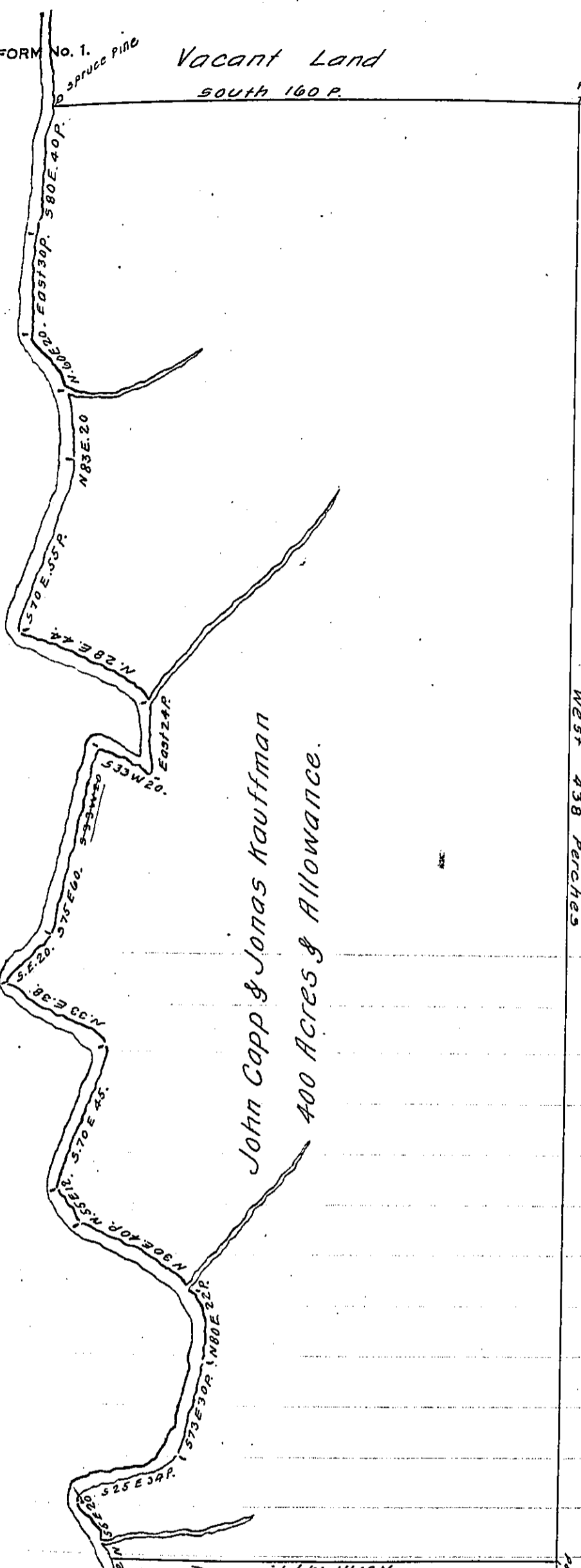


FORM No. 1.

Vacant Land  
South 160 P.

Up Pine Creek Several Courses 574 Perches.



John Capp & Jonas Kauffman  
400 Acres & Allowance.

West 438 Perches  
Vacant Land  
574 Perches

By Virtue of a Warrant dated the Twenty Sixth day of February 1787. Surveyed the 15<sup>th</sup> day of May 1787 To John Capp and Jonas Kauffman The above Described Tract of Land Situate Over the Broad Mountain in the County of Berks. Containing Four Hundred Acres and Allowance of Six & Cent for Roads &c.

To John Lukens Esquire  
Surveyor General of Pennsylvania

Thomas Clark. D.S.

IN TESTIMONY that the above is a copy of the original remaining on file in the Department of Internal Affairs of Pennsylvania, made conformably to an Act of Assembly approved the 16th day of February, 1833, I have hereunto set my Hand and caused the Seal of said Department to be affixed at Harrisburg, this twelfth day of August 1910.

*Henry Houck*  
Secretary of Internal Affairs.